

Dotsquares

Tax Switcher

Extension Overview :

The TaxSwitcher Extension is extremely useful for your eCommerce website. The extension enables users to change the price display settings in the frontend. By default, Magento 2 allows admin to choose whether the price will be shown including tax, excluding tax or both. However, it does not allow customers to change this setting in the frontend. The module contains a dropdown menu with two dropdown fields such as Inc. VAT and Ex. VAT.

The selected value of dropdown will reflect its results on category view pages, product detail pages and in the cart. The value of the dropdown menu will remain unchanged with its expected result until the customer changes the dropdown value. Also “Order Total” on the cart will not be affected with this module.

Do run the “php bin/magento setup:upgrade” command if you find any failure in module.

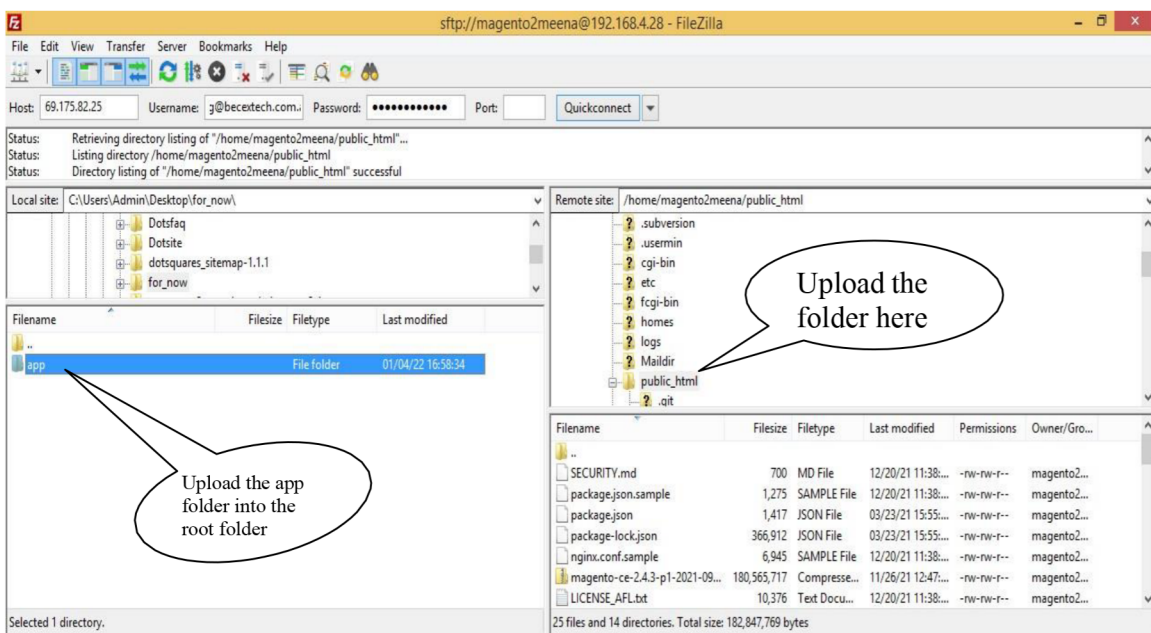
Extension Features :

- Show Taxswitcher as dropdown including two options “Inc. Tax and Ex. Tax”.
- Allow users to access the Taxswitcher in the frontend.
- Customers can select whether prices includes or excludes Tax/VAT and result would reflect without refreshing the page.
- Results of the dropdown will display on category pages, product detail view page ,on the cart and on the wishlist page.
- The selected value will remain unchanged until the user makes any changes to it.
- The “Order Total” on a cart would not affect the module’s actions.
- Provides a simple interface for admin.
- Compatible with the Magento community 2.4 and above.

Extension Installation :

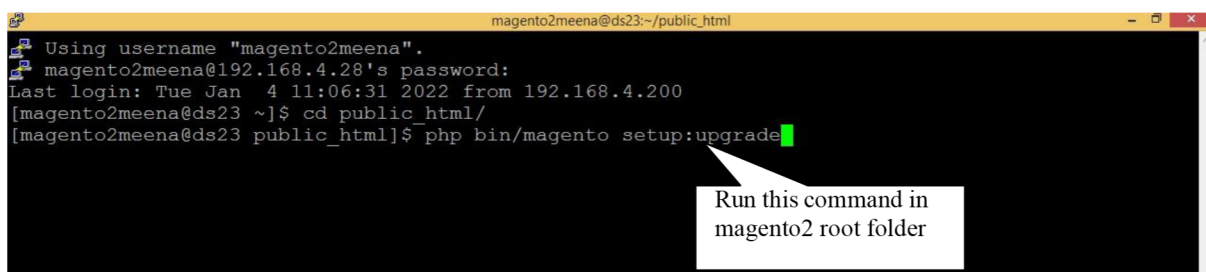
Installation Process

The installation of Extension Taxswitcher for Magento 2 is so easy and efficient. You just need to move 'app' folder in Magento 2 root directory as per the screenshot.



After the successful installation, you need to run the following commands in Magento 2 root directory.

Php bin/magento setup:upgrade



Php bin/magento setup:di:compile

```
[magento2meena@ds23 public_html]$ php bin/magento setup:di:compile
```

Run this command in magento2 root folder

php bin/magento setup:static-content:deploy

```
[magento2meena@ds23 public_html]$ php bin/magento setup:static-content:deploy
```

Run this command in magento2 root folder

After running these commands, you need to login the admin panel and make sure to clear the Cache. You can refer to the below screenshot.

Cache Management

Flush Cache Storage [Flush Magento Cache](#)

Refresh Submit 15 records found

Cache Type	Description	Tags	Status
<input type="checkbox"/> Configuration	Various XML configurations that were collected across modules and merged	CONFIG	INVALIDATED
<input type="checkbox"/> Layouts	Layout building instructions	LAYOUT_GENERAL_CACHE_TAG	ENABLED
<input type="checkbox"/> Blocks HTML output	Page blocks HTML	BLOCK_HTML	ENABLED
<input type="checkbox"/> Collections Data	Collection data files	COLLECTION_DATA	ENABLED
<input type="checkbox"/> Reflection Data	API interfaces reflection data	REFLECTION	ENABLED
<input type="checkbox"/> Database DDL operations	Results of DDL queries, such as describing tables or indexes	DB_DDL	ENABLED
<input type="checkbox"/> Compiled Config	Compilation configuration	COMPILED_CONFIG	ENABLED
<input type="checkbox"/> EAV types and attributes	Entity types declaration cache	EAV	ENABLED
<input type="checkbox"/> Customer Notification	Customer Notification	CUSTOMER_NOTIFICATION	ENABLED
<input type="checkbox"/> Integrations Configuration	Integration configuration file	INTEGRATION	ENABLED
<input type="checkbox"/> Integrations API Configuration	Integrations API configuration file	INTEGRATION_API_CONFIG	ENABLED
<input type="checkbox"/> Page Cache	Full page caching	FPD	INVALIDATED
<input type="checkbox"/> Web Services Configuration	REST and SOAP configurations, generated WSDL file	WEBSERVICE	ENABLED
<input type="checkbox"/> Translations	Translation files	TRANSLATE	ENABLED
<input type="checkbox"/> Vertex	Vertex tax calculation data	VERTEX	ENABLED

Additional Cache Management

How will extension work in the admin area :

After installation of the module, you need to enable the module in the back-end.


Configuration Q 2 admin ▾

Scope: Default Config ▾ ? Save Config

DOTSQUARES EXTENSIONS General ↻

Tax Price Switcher Enable Extension [more view] Yes ▾ Use system value

GENERAL ▾



Frontend View :

The following is a category view page. When Ex. Vat is selected on TaxSwitcher, the product price will also display as excluding tax.

The screenshot shows the LUMA website's category view for 'Tees'. The top navigation bar includes 'Default welcome msg!', 'Sign In or Create an Account', and a dropdown menu for 'Ex VAT'. A search bar is located below the navigation. The main navigation menu includes 'What's New', 'Women', 'Men', 'Gear', 'Training', and 'Sale'. The breadcrumb trail is 'Home > Women > Tops > Tees'. The category title 'Tees' is displayed. On the left, there are 'Shopping Options' with filters for STYLE, SIZE, PRICE, COLOR, MATERIAL, ECO COLLECTION, PERFORMANCE FABRIC, ERIN RECOMMENDS, NEW, and SALE. The main content area shows 12 items, with a 'Sort By' dropdown set to 'Position'. Four jackets are displayed in a grid:

- Josie Yoga Jacket-XL-Blue: Excl. Tax: **¥56.25**
- Ingrid Running Jacket-XL-Red: Excl. Tax: **¥84.00**
- Riona Full Zip Jacket-XL-Green: Excl. Tax: **¥60.00**

A red callout box points to the 'Ex VAT' dropdown menu with the text 'TaxSwitcher Ex.VAT selected'. Another red callout box points to the 'Excl. Tax' label for the first item with the text 'Excluding Tax price'.

The following is a Product Detail View page. When Inc. Vat is selected on taxSwitcher the product price will also display as including tax.

The screenshot shows the LUMA website's product detail view for 'Breathe-Easy Tank'. The top navigation bar includes 'Default welcome msg!', 'Sign In or Create an Account', and a dropdown menu for 'Inc VAT'. A search bar is located below the navigation. The main navigation menu includes 'What's New', 'Women', 'Men', 'Gear', 'Training', and 'Sale'. The breadcrumb trail is 'Home > Breathe-Easy Tank'. The product title 'Breathe-Easy Tank' is displayed. Below the title, there are 5 stars, '2 Reviews', and 'Add Your Review'. The price is shown as 'As low as **37.40**'. A red callout box points to the 'Inc VAT' dropdown menu with the text 'TaxSwitcher Inc.VAT selected'. Another red callout box points to the price '37.40' with the text 'Including Tax price'. The product image shows a woman wearing a white tank top. Below the image, there are size options (XS, S, M, L, XL), color options (purple, white, yellow), and a quantity selector set to '1'. An 'Add to Cart' button is located at the bottom.

